

# Visitor Oyster card offers

Explore more and pay less when visiting London



# Get more out of your visit



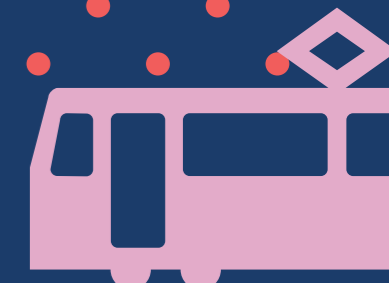
The Visitor Oyster card is valid for travel on most London public transport and saves you time and money when you're visiting London. Don't have a Visitor Oyster card yet? Buy one from the [VisitBritain](#) shop today.

With a Visitor Oyster card, you can also enjoy a wide range of exclusive discounts and offers across London. Simply show your card when you turn up at any of the attractions listed in this booklet. For full details of the offers and terms and conditions, see page 15.



## Explore London with a Santander Cycles Day Pass

You can explore the city's attractions at your own pace, with 12,000 bikes including e-bikes and 800 docking stations around the capital. Time to get pedalling, download the Santander Cycles app today.



# Offers

## Food and drink

Big Easy  
Butlers Wharf Chop House  
Camden Beer Hall  
Fish Market  
Hard Rock Cafe  
New Street Grill  
Oiler Bar  
Paternoster Chop House  
Skylon  
Top Hat Bar and Restaurant  
3 South Place

## Experiences

All Star Lanes  
Boom Battle Bar  
Escape Tours  
IFS Cloud Cable Car  
London Dungeon  
London Eye  
London Eye River Cruise  
Madame Tussauds  
Monopoly Lifesized  
Royal Albert Hall  
Sea Life London  
Shrek's Adventure  
Thames Rockets  
TOCA Social

## Museums and galleries

Brunel Museum  
Dr Johnson's House  
Estorick Collection  
The Fan Museum  
The Golden Hinde  
Hackney Museum  
London Transport Museum  
Museum of Brands  
Ragged School Museum  
Tate Britain  
Tate Modern  
The Viktor Wynd Museum of Curiosities  
World Rugby Museum



# Food and drink

## Top tip

### Check before you travel

Avoid service delays or disruptions to your journey by using the TfL Go app or visit [tfl.gov.uk](http://tfl.gov.uk)

Buy your Visitor Oyster card today



## Big Easy

### Free drink with every main meal

A taste of the Deep South with home-style barbecue cooking, a laid-back atmosphere and live music. Enjoy a complimentary Slushy Cocktail Thick Milkshake, Big Easy House Brew or soft drink with every main meal purchased from the a la carte menu.

**Locations:** Canary Wharf, Chelsea, Covent Garden, Westfield Stratford

#### ⊖ Nearest Tube stations:

**Canary Wharf:** Canary Wharf (Jubilee line, Elizabeth line, DLR)

**Chelsea:** Sloane Square (Circle and District lines – 15 minutes' walk)

**Covent Garden:** Charing Cross (Bakerloo and Northern lines), Covent Garden (Piccadilly line)

**Westfield Stratford:** Stratford (Central and Jubilee lines, Elizabeth line, Mildmay line, DLR)



## BUTLERS WHARF CHOP HOUSE

## Butlers Wharf Chop House

### 10% off the final bill

Traditional chop house with views of Tower Bridge, serving the finest meats cooked over charcoal alongside daily specials.

#### ⊖ Nearest Tube stations:

London Bridge (Jubilee and Northern lines, National Rail), Tower Hill (Circle and District lines)



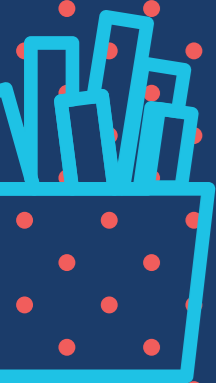
## Camden Beer Hall

### 20% off food and drinks

Visit the home of Camden Town Brewery.

#### ⊖ Nearest Tube stations:

Kentish Town (Northern line), Kentish Town West (Mildmay line)



### Top tip

#### Don't rush for the train

The Tube operates a frequent service, so you don't need to rush for the first train. Search TfL top travel tips to find out more.

Buy your Visitor Oyster card today



## FISH MARKET

### Fish Market

#### 10% off the final bill

Hidden gem seafood restaurant offering everything from daily fresh-off-the-boat specials to traditional fish and chips.

#### ⊖ Nearest Tube stations:

Liverpool Street (Central, Circle, Hammersmith & City and Metropolitan lines, Elizabeth line, National Rail)



### Hard Rock Cafe

#### 15% off merchandise

Visit the original Hard Rock Cafe London on Old Park Lane, established 14 June 1971, and the world's largest Rock Shop at Hard Rock Cafe Piccadilly Circus!

#### ⊖ Nearest Tube stations:

Hyde Park Corner (Piccadilly line), Green Park (Jubilee, Piccadilly and Victoria lines), Piccadilly Circus (Piccadilly line)

## NEW ST GRILL

EC2

### New Street Grill

#### 10% off the final bill

Modern take on the classic British steak house, with a list of over 500 wines focused on exceptional reds from around the world.

#### ⊖ Nearest Tube stations:

Liverpool Street (Central, Circle, Hammersmith & City and Metropolitan lines, Elizabeth line, National Rail)



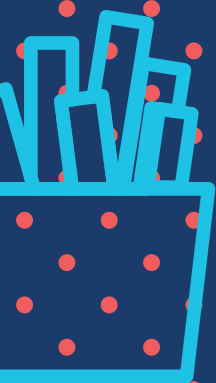
### Paternoster Chop House

#### 10% off the final bill

Old-fashioned British chop house close to St Paul's Cathedral specialising in the finest steaks and meats cooked over charcoal.

#### ⊖ Nearest Tube stations:

Blackfriars (Circle and District lines), St Paul's (Central line), City Thameslink (National Rail)

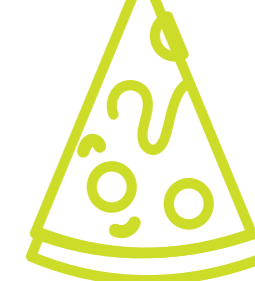
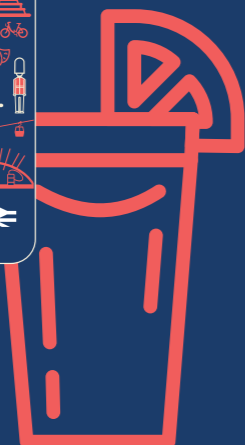


### Top tip

#### Travelling in Central London?

The busiest times are 06:30 to 09:30 and 16:00 to 19:00 – travel outside these times for a more comfortable journey. Search TfL top travel tips to find out more.

Buy your Visitor Oyster card today



## SKYLON

### Skylon

#### 10% off the final bill

Modern British cuisine in a stylish South Bank setting with views of the Thames and a destination cocktail bar.

#### 🚇 Nearest Tube stations:

Waterloo (Bakerloo, Jubilee, Northern and Waterloo & City lines)



### Top Hat Bar and Restaurant

#### 20% off the final bill

Lovingly inspired by the famous London Monopoly board. Enjoy signature cocktails and delicious food.

#### 🚇 Nearest Tube stations:

Goodge Street (Northern line) or Tottenham Court Road (Central, Northern and Elizabeth lines)

## 3

SOUTH PLACE

### 3 South Place

#### 15% off the final bill

Atmospheric bistro and bar in South Place Hotel, serving modern British classics from steaks and schnitzels to sandwiches and soups.

#### 🚇 Nearest Tube stations:

Moorgate (Circle, Hammersmith & City, Metropolitan and Northern lines), Liverpool Street (Central, Circle, Hammersmith & City and Metropolitan lines, Elizabeth line)

## OILER BAR

### Oiler Bar

#### 10% off the final bill

This former Royal Navy refuelling barge has been transformed into a unique floating beer garden with unbeatable views of the Royal Docks, Canary Wharf skyline and buzzing water sports action.

#### 🚇 Nearest Tube stations:

Custom House (Elizabeth line, DLR) and Royal Victoria (DLR, IFS Cloud Cable Car)

# Experiences

## Top tip

### Advice on travel and tickets

Our Visitor Centres give you advice on travelling in London. Find us in the Tube station at Heathrow Terminals 2 & 3, King's Cross & St Pancras, Liverpool Street, Piccadilly Circus and Victoria.

Buy your Visitor Oyster card today



## All Star Lanes

### 20% off bowling, food and drinks

Enjoy retro bowling, delicious American comfort food and handmade cocktails.

**Locations:** Brick Lane, Holborn, Stratford, White City

#### 🚫 Nearest Tube stations:

**Brick Lane:** Shoreditch High Street (Windrush line)

**Holborn:** Holborn (Central and Piccadilly lines)

**Stratford:** Stratford (Central and Jubilee lines, Elizabeth line, Mildmay line, DLR)

**White City:** Wood Lane (Hammersmith & City line), Shepherd's Bush (Central line, Mildmay line)



## Boom Battle Bar

### 15% off games Sunday to Thursday

Try shuffleboard, beer or prosecco pong, axe throwing, crazier golf, darts, American pool or karaoke!

**Locations:** Aldgate East, Ealing, The O2, Oxford Street, Wandsworth

#### 🚫 Nearest Tube stations:

**Aldgate East:** Aldgate East (District and Hammersmith & City lines)

**Ealing:** Ealing Broadway (Central and District lines, Elizabeth line)

**Oxford Street:** Oxford Circus (Bakerloo, Central and Victoria lines), Tottenham Court Road (Central and Northern lines, Elizabeth line)

**The O2:** North Greenwich (Jubilee line)

**Wandsworth:** Wandsworth Town (National Rail)



### Top tip

#### Daily caps

We cap your daily travel, so you can travel as much as you like and pay no more than the daily cap for the zones used.

Buy your Visitor Oyster card today



## Escape Tours

### 50% off tours

A fun blend of sightseeing and puzzle-solving.

#### ⊖ Nearest Tube stations:

Westminster (District & Circle and Jubilee lines)



## IFS Cloud Cable Car

### 30% off on off-peak round trips

Enjoy great views and a unique ride across the Thames on the London's only cable car.

#### ⊖ Nearest Tube stations:

IFS Greenwich Peninsula Terminal:  
North Greenwich (Jubilee line)

IFS Cloud Royal Docks Terminal:  
Royal Victoria (DLR)



## London Dungeon

Receive a keychain of your choice when you spend £20 in the gift shop

Scream and laugh your way through London's horrible past!

#### ⊖ Nearest Tube stations:

Waterloo (Bakerloo, Jubilee, Northern and Waterloo & City lines)



lastminute.com  
London Eye

## London Eye

Receive a keychain of your choice when you spend £20 in the gift shop

Mesmerising 360-degree views of the capital.

#### ⊖ Nearest Tube stations:

Waterloo (Bakerloo, Jubilee, Northern and Waterloo & City lines)



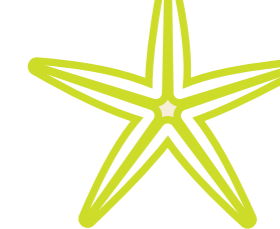


### Top tip

#### Stand on the right

Always stand on the right when using the escalators at Tube stations, leaving enough space for other people to pass.

Buy your Visitor Oyster card today



## London Eye River Cruise

Receive a keychain of your choice when you spend £20 in the gift shop

A 40-minute circular sightseeing tour taking in London's iconic riverside locations.

⊖ Nearest Tube stations:

Waterloo (Bakerloo, Jubilee, Northern and Waterloo & City lines)

## Madame Tussauds

## Madame Tussauds

Receive a keychain of your choice when you spend £20 in the gift shop

A chance to get up close and personal with more than 150 lifelike wax figures!

⊖ Nearest Tube stations:

Baker Street (Circle, Hammersmith & City, Jubilee and Metropolitan lines)



## Monopoly Lifesized

10% off in the gift shop

The high-octane way to play the planet's favourite board game.

⊖ Nearest Tube stations:

Goodge Street (Northern line) and Tottenham Court Road (Central and Northern lines, Elizabeth line)



Royal Albert Hall

## Royal Albert Hall

20% off tickets for the Royal Albert Hall

Opened in 1871, the Royal Albert Hall is the world's most famous stage.

⊖ Nearest Tube stations:

South Kensington (Circle, District and Piccadilly lines)



### Top tip

#### Daily caps

We cap your daily travel, so you can travel as much as you like and pay no more than the daily cap for the zones used.

Buy your Visitor Oyster card today



## Sea Life London

Receive a keychain of your choice when you spend £20 in the gift shop

Discover over 500 species from every part of the world in 14 themed zones.

🚫 Nearest Tube stations:

Waterloo (Bakerloo, Jubilee, Northern and Waterloo & City lines)



## Shrek's Adventure

Receive a keychain of your choice when you spend £20 in the gift shop

Step into and star in your own adventure with Shrek and his DreamWorks Friends

🚫 Nearest Tube stations:

Waterloo (Bakerloo, Jubilee, Northern and Waterloo & City lines)



## Thames Rockets

Receive a free Thames Rockets refillable cup

London's number one speedboat tour provider.

🚫 Nearest Tube stations:

Waterloo (Bakerloo, Jubilee, Northern and Waterloo & City lines)



## TOCA Social

25% off game time

The world's first and only immersive football and dining experience.

🚫 Nearest Tube stations:

North Greenwich (Jubilee line)

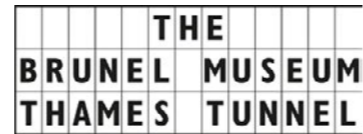
# Museums and galleries

## Top tip

### Touch in and out

On the Tube, tap the yellow card readers with your Visitor Oyster card at the start and end of your journey. On buses and trams you only need to touch in at the start of your journey.

Buy your Visitor Oyster card today



## Brunel Museum

### 15% off in the shop

Visit the museum dedicated to an engineering family that changed the world.

#### 🚫 Nearest Tube stations:

Rotherhithe (Windrush line)



Dr Johnson's House

## Dr Johnson's House

### Two-for-one entry on adult tickets

'When a man is tired of London, he is tired of life'. Visit the London home of Dr Samuel Johnson, one of England's greatest literary figures, who wrote the first proper English Dictionary here in 1755.

#### 🚫 Nearest Tube stations:

Blackfriars or Temple (Circle and District lines) and Chancery Lane (Central line)



## The Fan Museum

### £2 off admission

Discover the history, culture and craft of the fan.

#### 🚫 Nearest Tube stations:

Greenwich (DLR, National Rail)

#### Estorick Collection

of modern Italian art

## Estorick Collection

### Two-for-one entry on adult tickets

The Estorick Collection is known internationally for its futurist works and 20th century Italian art.

#### 🚫 Nearest Tube stations:

Highbury & Islington (Victoria line, Mildmay and Windrush lines)



### Top tip

#### Travelling in Central London?

The busiest times are 06:30 to 09:30 and 16:00 to 19:00 – travel outside these times for a more comfortable journey. Search TfL top travel tips to find out more.

Buy your Visitor Oyster card today



## The Golden Hinde

### £2 off admission

Sail through history aboard the full-size reconstruction of the famous Elizabethan galleon, the first English ship to circumnavigate the globe.

#### 🚫 Nearest Tube stations:

London Bridge (Jubilee and Northern lines)



## Hackney Museum

### 10% off 'I love Hackney' gifts and souvenirs

Discover the stories of some of the amazing people who made their home in East London over the last 1,500 years.

#### 🚫 Nearest Tube stations:

Hackney Central (Mildmay line), Hackney Downs or London Fields (Weaver line)



## London Transport Museum

### 10% off gifts and souvenirs

Get 10 per cent off exclusive designer gifts and souvenirs in London Transport Museum's shop in the heart of Covent Garden

#### 🚫 Nearest Tube stations:

Covent Garden (Piccadilly line)



## Museum of Brands

### Two-for-one entry on adult tickets

Discover the fascinating history of consumer culture and brands from Victorian times to the present day.

#### 🚫 Nearest Tube stations:

Ladbroke Grove (Circle and Hammersmith & City lines)



### Top tip

#### Check before you travel

Avoid service delays or disruptions to your journey by using the TfL Go app or visit [tfl.gov.uk](http://tfl.gov.uk)

Buy your Visitor Oyster card today



## RAGGED SCHOOL MUSEUM

### Ragged School Museum

#### Two-for-one entry

Discover the story of London's largest Victorian Ragged School, opened by Dr Barnardo in 1877.

#### Nearest Tube stations:

Mile End (Central, District and Hammersmith & City lines)



### Tate Britain

#### 20% off Discovery Tours

Explore the very best of British art with a collection spanning 500 years.

#### Nearest Tube stations:

Pimlico (Victoria line)



### Tate Modern

#### 20% off Discovery Tours

Explore modern and contemporary art from around the world.

#### Nearest Tube stations:

Blackfriars (Circle and District lines), St Paul's (Central line), Southwark (Jubilee line)





### Top tip

#### Stand on the right

Always stand on the right when using the escalators at Tube stations, leaving enough space for other people to pass.

Buy your Visitor Oyster card today



## The Viktor Wynd Museum of Curiosities

### Two-for-one entry

A museum of curiosities, fine art and natural history.

#### 🚫 Nearest Tube stations:

Cambridge Heath (Weaver line)



## World Rugby Museum

### 20% off World Rugby Museum entry

Explore the world's most prestigious collection of rugby memorabilia.

#### 🚫 Nearest Tube stations:

Twickenham (National Rail)



# Terms and conditions

Offer	Website	Address	Contact	Terms and conditions
All Star Lanes	<a href="http://allstarlanes.co.uk">allstarlanes.co.uk</a>	<p><b>Brick Lane</b> 95 Brick Lane, London E1 6QL</p> <p><b>Holborn</b> Victoria House, Bloomsbury Place, London WC1B 4DA</p> <p><b>Stratford</b> 2nd floor, Westfield Stratford City, London E20 1ET</p> <p><b>White City</b> Westfield London Shopping Centre, Ariel Way, London W12 7FU</p>	<a href="mailto:info@allstarlanes.co.uk">info@allstarlanes.co.uk</a>	Present your Visitor Oyster card before paying to claim 20 per cent off the final bill. Available Sunday to Friday all day. Not valid on Saturdays. Excludes 1 to 24 December. Not valid in conjunction with any other offer, package or discount. Pre-booking recommended but walk-ins welcome. Maximum 21 guests per booking. Subject to availability.
Big Easy	<a href="http://bigeasy.co.uk">bigeasy.co.uk</a>	<p><b>Canary Wharf</b> Park Level, Crossrail Place, Canary Wharf, London E14 5AR</p> <p><b>Chelsea</b> 332-334 Kings Road, London SW3 5UR</p> <p><b>Covent Garden</b> 12 Maiden Lane, London WC2E 7NA</p> <p><b>Westfield Stratford</b> 158 Westfield Avenue, London E20 1EN</p>	See website for details	Maximum six guests per booking/per Visitor Oyster card.
Boom Battle Bar	<a href="http://boombattlebar.com/uk">boombattlebar.com/uk</a>	<p><b>Aldgate East</b> 19 Chaucer Gardens, London E1 8QG</p> <p><b>Ealing</b> Filmworks Walk, The Broadway, London W5 5FA</p> <p><b>London Oxford Street</b> 70-88 Oxford Street, London W1D 1BS</p> <p><b>The O2</b> 23 Entertainment Avenue, London SE10 0DY</p> <p><b>Wandsworth</b> 9 Barley Walk, London SW18 1UL</p>	<p><b>Aldgate East</b> <a href="mailto:aldgateeast@boombattlebar.com">aldgateeast@boombattlebar.com</a></p> <p><b>Ealing</b> <a href="mailto:ealing@boombattlebar.com">ealing@boombattlebar.com</a></p> <p><b>London Oxford Street</b> <a href="mailto:oxfordstreet@boombattlebar.com">oxfordstreet@boombattlebar.com</a></p> <p><b>The O2</b> <a href="mailto:o2@boombattlebar.com">o2@boombattlebar.com</a></p> <p><b>Wandsworth</b> <a href="mailto:wandsworth@boombattlebar.com">wandsworth@boombattlebar.com</a></p>	Boom Battle Bar is strictly an over-18s venue after 19:00. Present your Visitor Oyster card at the reception/desk before paying for your booking in venue to redeem 15 per cent off games. Offer valid Sunday to Thursday. Not available in conjunction with other discounts and promotions. Valid in Aldgate East, Ealing, The O2, Oxford Street and Wandsworth.
Brunel Museum	<a href="http://thebrunelmuseum.com">thebrunelmuseum.com</a>	<b>Railway Avenue,</b> London SE16 4LF	+44 (0)20 7231 3840	Please present your Visitor Oyster card at time of purchase.
Butlers Wharf Chop House	<a href="http://chophouse-restaurant.co.uk">chophouse-restaurant.co.uk</a>	<b>36e Shad Thames,</b> London SE1 2YE	+44 (0)20 7403 3403	Available all day when dining on the A La Carte Menu, for up to six guests. Offer not available in November or December.



Offer	Website	Address	Contact	Terms and conditions
Camden Beer Hall	<a href="http://camdentownbrewery.com">camdentownbrewery.com</a>	55-59 Wilkin Street Mews, London NW5 3NN	+44 (0)20 3815 7499	Camden Beer Hall's kitchen is closed on Mondays and Tuesdays. Present your Visitor Oyster card to the bar staff for 20 per cent off food and drink. Offer not valid on brewery tours or merchandise.
Dr Johnson's House	<a href="http://drjohnsonshouse.org">drjohnsonshouse.org</a>	17 Gough Square, London EC4A 3DE	+44 (0)20 7353 3745	Valid for full-price adult admission tickets only during normal opening hours on presentation of a valid Visitor Oyster card.
Escape Tours	<a href="http://en.escapetours.com/city/london">en.escapetours.com/city/london</a>	See website for details	See website for details	Use code VB2024ETOYS50 when booking. Offer valid until 31 March 2026.
Estorick Collection	<a href="http://estorickcollection.com">estorickcollection.com</a>	39a Canonbury Square, London NI 2AN	+44 (0)20 7704 9522	Not valid with any other offer or concession. Opening times may vary, check website.
The Fan Museum	<a href="http://thefanmuseum.org.uk">thefanmuseum.org.uk</a>	12 Crooms Hill, London SE10 8ER	+44 (0)20 8305 1441	See website for details
Fish Market	<a href="http://fishmarket-restaurant.co.uk">fishmarket-restaurant.co.uk</a>	16B New Street, London EC2M 4TR	+44 (0)20 3503 0790	Available all day when dining on the A La Carte Menu, for up to six guests. Offer not available in November or December.
The Golden Hinde	<a href="http://goldenhinde.co.uk">goldenhinde.co.uk</a>	St Mary Overies Dock, Cathedral Street, London SE1 9DE	+44 (0)20 7403 0123	See website for details
Hackney Museum	<a href="http://hackney.gov.uk/museum">hackney.gov.uk/museum</a>	1 Reading Lane, London E8 IGQ	+44 (0)20 8356 2509	Please present your Visitor Oyster card at time of purchase. Offer valid on 'I Love Hackney' merchandise only, while stocks last. Payment by cash or card only.
Hard Rock Cafe	<a href="http://cafe.hardrock.com">cafe.hardrock.com</a>	<b>Hard Rock Cafe London</b> 150 Old Park Lane, London W1K 1QZ  <b>Hard Rock Cafe Piccadilly Circus</b> 225-229 Piccadilly, Criterion Building, London W1J 9HR	<b>Hard Rock Cafe London</b> +44 (0)20 7514 1700  <b>Hard Rock Cafe Piccadilly Circus</b> +44 (0)20 7287 4600	Present your Visitor Oyster card at the cash desk to redeem.
IFS Cloud Cable Car	<a href="http://tfl.gov.uk/cable-car">tfl.gov.uk/cable-car</a>	<b>IFS Greenwich Peninsula</b> Terminal, Edmund Halley Way, London SE10 0FR  <b>IFS Cloud Royal Docks</b> Terminal, 27 Western Gateway, London E16 1FA	+44 (0)343 222 1234	Only available for off-peak round trips. Fares are not included in the Visitor Oyster card daily fare cap. Off-peak periods are weekdays that aren't school holidays or bank holidays. Discount available at the ticket office – ask the staff for more information.
London Dungeon	<a href="http://thedungeons.com/london">thedungeons.com/london</a>	Riverside Building, County Hall, Westminster Bridge Road, London SE1 7PB	+44 (0)20 7967 8022	London Dungeon retains the right to deactivate the offer at any time. Valid for one transaction. Valid for one person per Visitor Oyster card presented. Minimum RRP value of £4.





Offer	Website	Address	Contact	Terms and conditions
London Eye	<a href="http://londoneye.com">londoneye.com</a>	Riverside Building, County Hall, Westminster Bridge Road, London SE1 7PB	See website for details	London Eye retains the right to deactivate the offer at any time. Valid for one transaction. Valid for one person per Visitor Oyster card presented. Minimum RRP value of £4.
London Eye River Cruise	<a href="http://londoneye.com/river-cruise">londoneye.com/river-cruise</a>	Riverside Building, County Hall, Westminster Bridge Road, London SE1 7PB	See website for details	London Eye River Cruise retains the right to deactivate the offer at any time. Valid for one transaction. Valid for one person per Visitor Oyster card presented. Minimum RRP value of £4.
London Transport Museum	<a href="http://ltmuseum.co.uk">ltmuseum.co.uk</a>	Covent Garden Piazza, London WC2E 7BB	+44 (0)343 222 5000	Excludes Models and Art on the Underground. Cannot be used in conjunction with any other offer.
Madame Tussauds	<a href="http://madametussauds.com/london">madametussauds.com/london</a>	Marylebone Road, London NW1 5LR	+44 (0)20 7487 0351	Madame Tussauds retains the right to deactivate the offer at any time. Valid for one transaction. Valid for one person per Visitor Oyster card presented. Minimum RRP value of £4.
Monopoly Lifesized	<a href="http://monopolylifesized.com">monopolylifesized.com</a>	213-215 Tottenham Court Road, London W1T 7PS	+44 (0)20 8164 6469	See website for details
Museum of Brands	<a href="http://museumofbrands.com">museumofbrands.com</a>	111-117 Lancaster Road, Notting Hill, London W11 1QT	+44 (0)20 7243 9611	Valid for full-price adult tickets only.
New Street Grill	<a href="http://newstreetgrill.co.uk">newstreetgrill.co.uk</a>	16A New Street, London EC2M 4TR	+44 (0)20 3503 0785	Available all day when dining on the A La Carte Menu, for up to six guests. Offer not available in November or December.
Oiler Bar	<a href="http://theoilerbar.com">theoilerbar.com</a>	Royal Victoria Beach, Royal Victoria Docks, London E16 1AG	See website for details	See website for details
Paternoster Chop House	<a href="http://paternosterchophouse.co.uk">paternosterchophouse.co.uk</a>	35 Old Bailey, London EC4M 7AU	+44 (0)20 7029 9400	Booking advised. Offer available Monday to Saturday 12:00-15:00 and 17:00-21:00. Maximum of six people per booking. Offer not available on New Year's Eve, Valentine's Day or Mother's Day. Can't be used in conjunction with any other offers. Visitor Oyster Card to be presented when entering restaurant or sitting at the table. Offer not available in November or December.
Ragged School Museum	<a href="http://raggedschoolmuseum.org.uk">raggedschoolmuseum.org.uk</a>	46-50 Copperfield Road London E3 4RR	+44 (0)20 8980 6405	Offer available only with full-price adult admission. Not valid in conjunction with group or any other discount or promotion.
Royal Albert Hall	<a href="http://royalalberthall.com">royalalberthall.com</a>	Kensington Gore, London SW7 2AP	+44 (0)20 7589 8212	Visit royalalberthall.com for tour times and prices. Offer valid on walk-in tickets only, available from the Box Office at Door 12.
Sea Life London	<a href="http://visitsealife.com/london">visitsealife.com/london</a>	Riverside Building, County Hall, Westminster Bridge Road, London SE1 7PB	+44 (0)20 7967 8025	Sea Life London retains the right to deactivate the offer at any time. Valid for one transaction. Valid for one person per Visitor Oyster card presented. Minimum RRP value of £4.

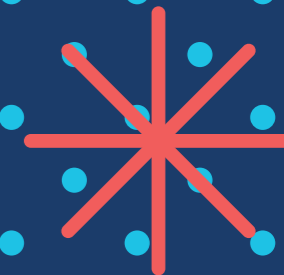


Offer	Website	Address	Contact	Terms and conditions
Shrek's Adventure	<a href="http://shreksadventure.com">shreksadventure.com</a>	Riverside Building, County Hall, Westminster Bridge Road, London SE1 7PB	+44 (0)20 7967 8027	Shrek's Adventure retains the right to deactivate the offer at any time. Valid for one transaction. Valid for one person per Visitor Oyster card presented. Minimum RRP value of £4.
Skylon	<a href="http://skylon-restaurant.co.uk">skylon-restaurant.co.uk</a>	Royal Festival Hall, Belvedere Road, London SE1 8XX	+44 (0)20 7854 7800	Offer not available in November or December.
Tate Britain	<a href="http://tate.org.uk/visit/tate-britain">tate.org.uk/visit/tate-britain</a>	Millbank, London SW1P 4RG	+44 (0)20 7887 8888 option 1 (10.00–17.00 daily)	See website for details
Tate Modern	<a href="http://tate.org.uk/visit/tate-modern">tate.org.uk/visit/tate-modern</a>	Bankside, London SE1 9TG	+44 (0)20 7887 8888 option 1 (10.30–17.00 daily)	See website for details
Thames Rockets	<a href="http://thamesrockets.com">thamesrockets.com</a>	Boarding Gate One, The London Eye, Millennium Pier, Westminster Bridge Road, London SE1 7PB	+44 (0)20 7928 8933	Valid for one person per Visitor Oyster card presented. Customers must have a valid Thames Rocket sailing ticket together with the Visitor Oyster card.
3 South Place	<a href="http://southplacehotel.com/eat-and-drink">southplacehotel.com/eat-and-drink</a>	South Place Hotel, 3 South Place, London EC2M 2AF	+44 (0)20 3215 1270	Available Friday to Monday. Visitor Oyster Card to be presented when entering the restaurant or sitting at the table. Offer not available in November or December.
TOCA Social	<a href="http://toca.social">toca.social</a>	The O2, Peninsula Square, London SE10 0DX	+44 (0)330 331 4800	Offer is valid from Monday to Friday only.
Top Hat Bar and Restaurant	<a href="http://thetophatrestaurant.com">thetophatrestaurant.com</a>	213-215 Tottenham Court Road, London W1T 7PS	+44 (0)20 8164 4098	Not valid in conjunction with any other offer. Payment by card only. Restaurant discount applies to a la carte menu (excluding kids' menu). Valid daily (except 12:00–17:00 Saturday) on total bill on all operational days (please check website for kitchen hours). Subject to availability. Pre-booking recommended. One Visitor Oyster card per table (maximum eight persons). Present your Visitor Oyster card to your server before ordering.
The Viktor Wynd Museum of Curiosities	<a href="http://thelasttuesdaysociety.org/museum">thelasttuesdaysociety.org/museum</a>	11 Mare Street, London E8 4RP	See website for details	See website for details
World Rugby Museum	<a href="http://worldrugbymuseum.com">worldrugbymuseum.com</a>	Allianz Stadium, Whitton Road, Twickenham TW2 7BA	See website for details	Offer is not valid on the Allianz Stadium Tour.

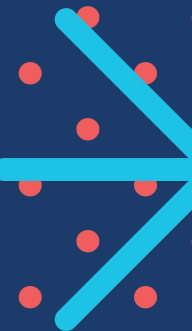
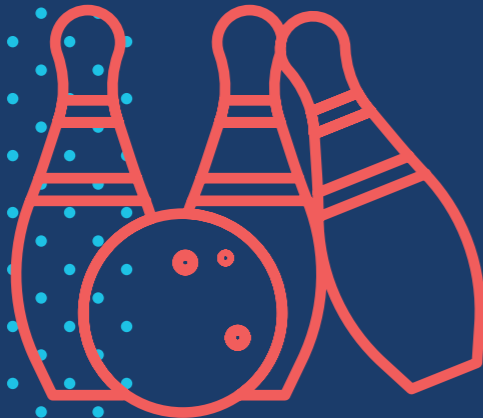
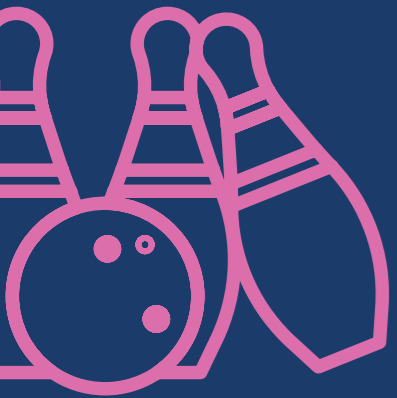
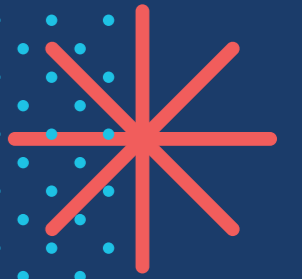


# General terms and conditions

- Offers and discounts not valid in conjunction with any other offers, coupons, deal menus or sale items
- Please present your Visitor Oyster card to your server before ordering or shopping
- Other items might be excluded – please ask in store for more details when applicable
- All offers subject to availability, no cash alternative
- Please check individual websites for the full details of the business and branches participating in the offers
- Please check individual websites for opening hours and closing dates
- Other items and dates maybe excluded ask in store for details
- Transport for London and VisitBritain Shop will not be held liable in the event that you are refused use of any offer
- Please contact the offer provider directly for any issues relating to offer redemption



# Maps



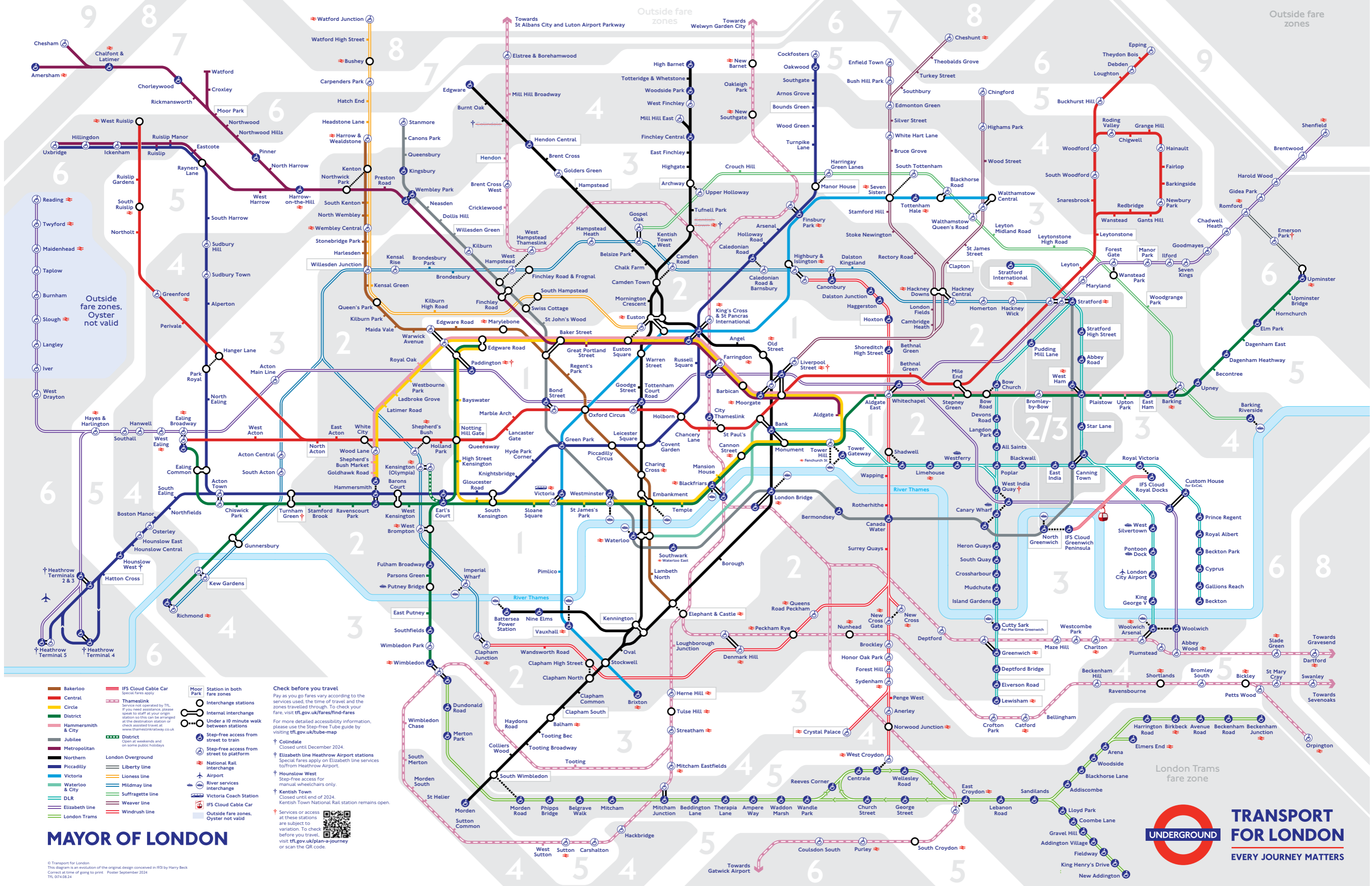
# Tube map

The Night Tube runs on Friday and Saturday nights on the Jubilee and Victoria lines and on most of the Central, Northern and Piccadilly lines. Night services also run on part of London Overground.

Check your travel  
[tfl.gov.uk/travel-tools](https://tfl.gov.uk/travel-tools)

24 hour travel information  
 0343 222 1234\*

Plan your journey  
 Download the TfL Go app



- Bakerloo**
- Central**
- District**
- Hammersmith & Jubilee**
- Jubilee**
- Metropolitan**
- Northern**
- Piccadilly**
- Victoria**
- Waterloo & City**
- DLR**
- Elizabeth Line**
- London Trams**
- IFS Cloud Cable Car**
- Thameslink**
- Moor Park**
- Station in both fare zones**
- Interchange stations**
- Internal interchange**
- Under a 10 minute walk between stations**
- Step-free access from street to train**
- Step-free access from street to platform**
- National Rail interchange**
- Airport**
- River services interchange**
- Victoria Coach Station**
- IFS Cloud Cable Car**
- Outside fare zones. Oyster not valid**

**Check before you travel**  
 Pay as you go fares vary according to the services used, the time of travel and the zones travelled through. To check your fare, visit [tfl.gov.uk/fares/find-fares](https://tfl.gov.uk/fares/find-fares).  
 For more detailed accessibility information, please use the Step-free Tube guide by visiting [tfl.gov.uk/tube-map](https://tfl.gov.uk/tube-map).  
 † Colindale Closed until December 2024.  
 † Elizabeth line Heathrow Airport stations Special fares apply on Elizabeth line services to/from Heathrow Airport.  
 † Hounslow West Step-free access for manual wheelchairs only.  
 † Kentish Town Closed until end of 2024. Kentish Town National Rail station remains open.  
 † Services or access are subject to variation. To check before you travel, visit [tfl.gov.uk/plan-a-journey](https://tfl.gov.uk/plan-a-journey) or scan the QR code.

MAYOR OF LONDON



© Transport for London  
 This diagram is an evolution of the original design conceived in 1931 by Harry Beck  
 Correct at time of going to print. Poster September 2024  
 TFL 02/4/2024

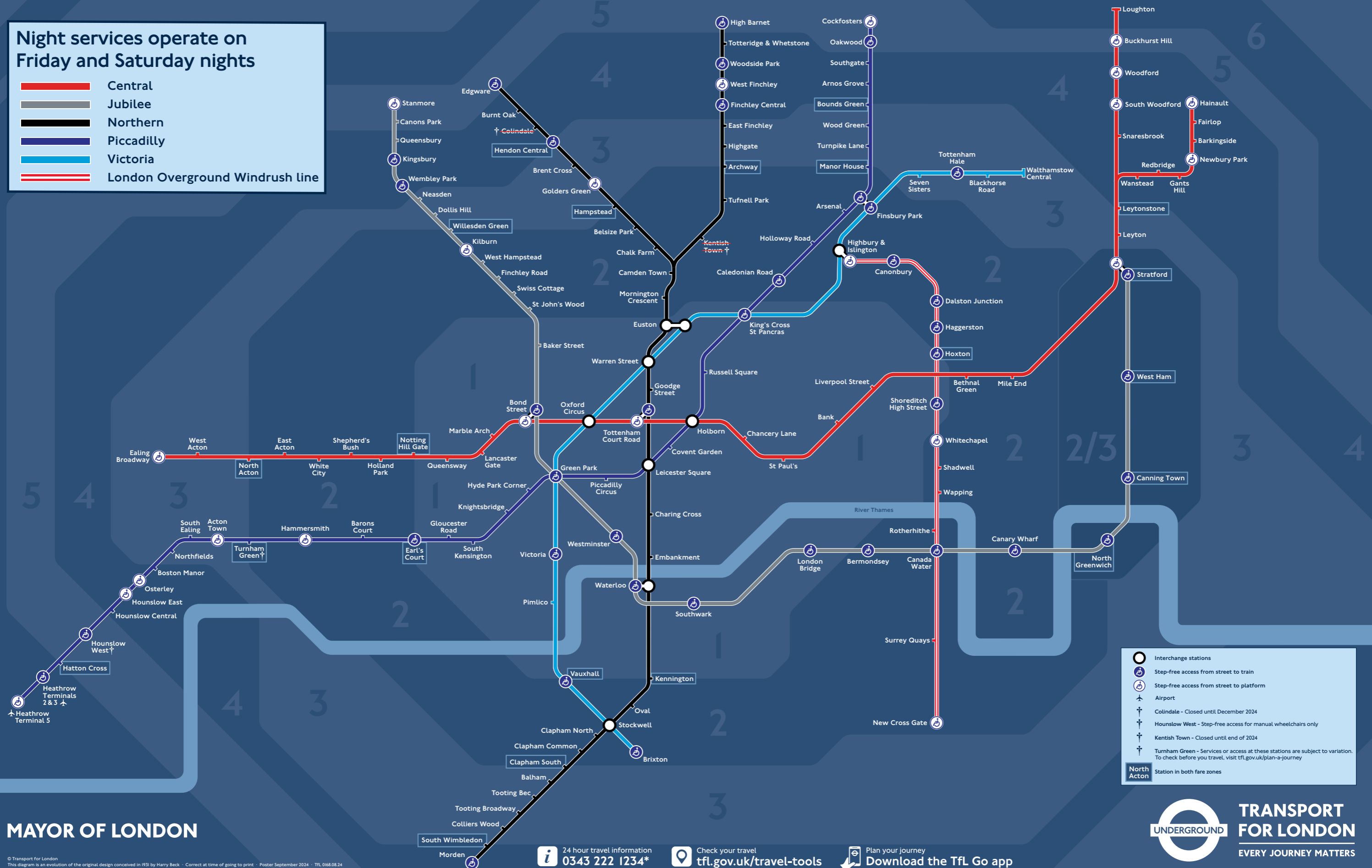
# Night Tube and London Overground map

Operates on Friday and Saturday nights



**Night services operate on Friday and Saturday nights**

- █ Central
- █ Jubilee
- █ Northern
- █ Piccadilly
- █ Victoria
- █ London Overground Windrush line



- Interchange stations
- Step-free access from street to train
- Step-free access from street to platform
- Airport
- Colindale - Closed until December 2024
- Hounslow West - Step-free access for manual wheelchairs only
- Kentish Town - Closed until end of 2024
- Turnham Green - Services or access at these stations are subject to variation. To check before you travel, visit [tfl.gov.uk/plan-a-journey](https://tfl.gov.uk/plan-a-journey)
- North Acton Station in both fare zones

MAYOR OF LONDON

**TRANSPORT FOR LONDON**  
EVERY JOURNEY MATTERS

© Transport for London  
This diagram is an evolution of the original design conceived in 1931 by Harry Beck - Correct at time of going to print - Poster September 2024 - TFL 0168.08.24

24 hour travel information  
0343 222 1234\*

Check your travel  
[tfl.gov.uk/travel-tools](https://tfl.gov.uk/travel-tools)

Plan your journey  
Download the Tfl Go app

\*Network charges may apply. See [tfl.gov.uk/terms](https://tfl.gov.uk/terms) for details.

# Key bus routes in central London

